

X2 Zip Line

Installation/Owner's Manual

v.0.2 26102014

©2014 Alien Flier LLC. All Rights Reserved



SAFETY WARNING

DO NOT use Alien Flier Zip Line Products until you have read and fully understand the SAFETY WARNINGS below!

Assumption of Risk

Zip line construction and use can be dangerous. Ensure you know what you are doing before building or using your Alien Flier Zip Line kit or other Alien Flier LLC products. Alien Flier LLC takes no responsibility for the installation, servicing, maintenance, tree issues, and periodic inspection, related components or of any installed zip line using our products. No warranty related to Alien Flier Products is expressed or implied by installation tips or by any representative of Alien Flier LLC, including warranties of merchantability or fitness. Ensure you educate yourself on the proper installation, maintenance and use of everything related to your Alien Flier product. **Seek competent local assistance** if you are unsure of how to work with trees, cable installation or maintenance. All information related to Alien Flier products received from any representative, printed, or digital, distributed by Alien Flier LLC is only an opinion and shall not be interpreted as an expert or professional advice. Contact component manufacturer for information about warranty and use of their products

- **A zip line can be very dangerous.**
Do not use this kit if you do not understand the risk involved in riding a zip line. The cable can hold weights many times that of most riders and is the least part of the system to fail. Pay special attention to your workmanship making the loops and slings for these are the areas where failures are more common to occur.
- **Use under adult supervision only.**
- **Do not mount your zip line to anything other than proper size trees.**
- **Inspect the entire zip line system including the pulley and sling for damage or wear before every use. DO NOT ride a system that is damaged.**
- **Falling + Fast Speeds + Rough Landings (stumps, rocks etc.) = Serious injury**
- **Ignoring safety recommendations = Serious injury**
- **Poor installation workmanship = Serious injury**
- **Single riders only! Do not ride double. Never overload the cable. We do not recommend riders over 275 lbs.**
- **Always hold onto the T-bar with both hands. ALWAYS ride seated if seat is attached.**
- **Do not jump off your zip line while you are traveling on it.**
- **Make sure there are no obstructions in the path of the rider.**
- **Do not install a zip line around a high voltage line, over roads or ravines.**
- **Never set the cable rate of descent to unsafe angles or heights.**
- **Always include a safety back up STOP BLOCK in conjunction with all of our models**

X2 Zip Line

Installation/Owner's Manual

v.0.2 26102014

©2014 Alien Flier LLC. All Rights Reserved

EZUP Solo Zip Line Cable Kit

For the HIGHER END of your Zip Line

1. With the pre-made eye-loop toward the high end of your run, wrap the cable around the tree then through the eye-loop at the desired height. Pull tight enough to hold.

For the LOWER END of your Zip Line

1. Secure the felted Tree Pad around the back of your tree at the desired height.
2. Wrap the webbing around the tree on the Tree Pad. Slip the flat end through webbing loop. Pull to tighten.
3. Insert the flat end of the 2" webbing into the ratchet handle, pull webbing through until taut. Tighten slightly to hold. (fig. 1)
4. Insert cable through snap hook on ratchet and pull cable as tight as possible. Secure cable to hook using the 3 cable clamps provided. (fig. 2)
5. Tighten the ratchet handle until the cable has the desired tension.
6. **Close ratchet handle FULLY to engage safety lock.** (fig. 4)

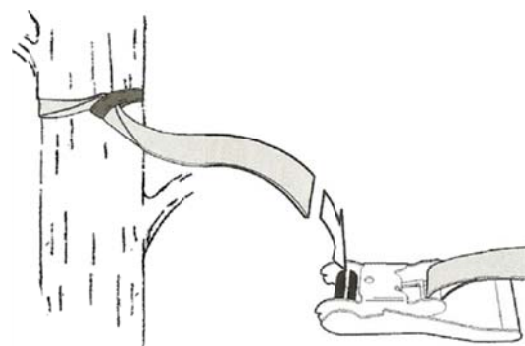


Figure 1.

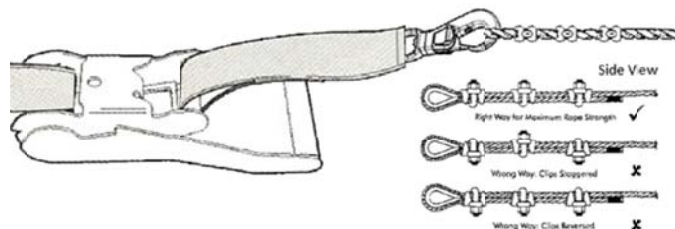


Figure 2.

Safety Link

Never use your zip line without this link in place. Link must be tight at all times to prevent injury.

1. On the **webbing side** of your line, wrap the 1" RED Safety Link around your tree.
2. Thread the free end of the webbing **through the eye-loop** of the cable.
3. Insert the flat end of the 1" webbing in to the ratchet handle, crank until tight.
4. **Close ratchet handle FULLY to engage safety lock.** (fig. 4)

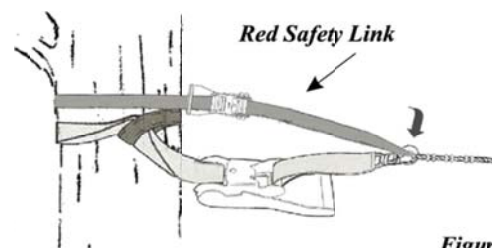


Figure 3.

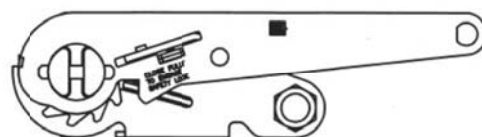


Figure 4.

X2 Zip Line

Installation/Owner's Manual

v.0.2 26102014

©2014 Alien Flier LLC. All Rights Reserved



ziplines & slacklines

EZUP Duo Ratchet Zip Line Cable Kit

1. Unroll cable between the two trees you have chosen for your zip line, with the eye-loop toward the high end of your run.
2. Secure the felted Tree Pad around the back of your tree at the desired height.
3. Wrap the webbing around the tree on the Tree Pad. Slip the flat end through webbing loop. Pull to tighten.
4. Insert the flat end of the 2" webbing into the ratchet handle, pull webbing through until taut. Tighten slightly to hold. (fig. 1)
5. Insert cable eye-loop in to snap hook.
6. Repeat step 2, 3 & 4 at the other end of zip line
7. Insert cable through snap hook on ratchet and pull cable as tight as possible. Secure cable to hook using the 3 cable clamps provided. A second person may be helpful to help pull cable while the other secures it. (fig. 2)
8. Tighten cable by cranking ratchets to desired tension.
9. **Close ratchet handles FULLY to engage safety lock.** (fig. 4)

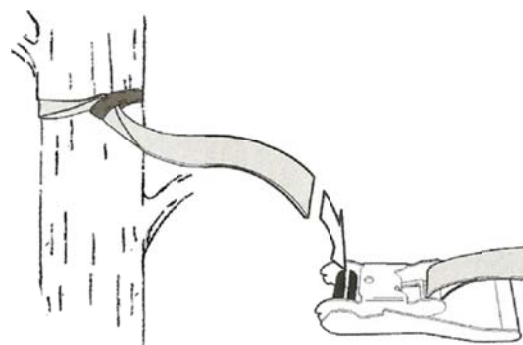


Figure 1.

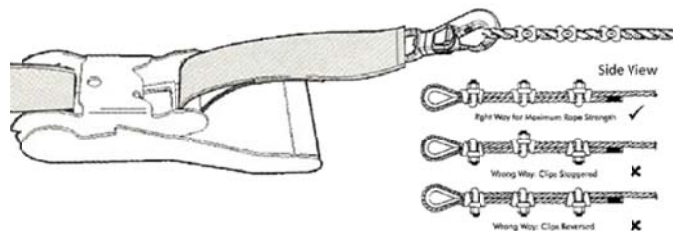


Figure 2.

Safety Link

Never use your zip line without this link in place. Link must be tight at all times to prevent injury.

1. On **each side** of your line, wrap the 1" RED Safety Link around your tree.
2. Thread the free end of the webbing **through the eye-loop** of the cable.
3. Insert the flat end of the 1" webbing in to the ratchet handle, crank until tight.
4. **Close ratchet handle FULLY to engage safety lock.** (fig. 4)

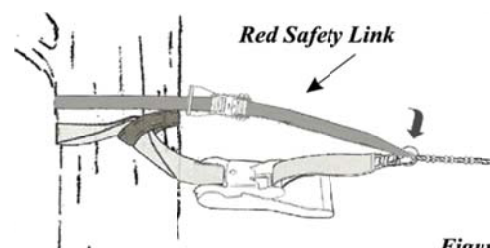


Figure 3.

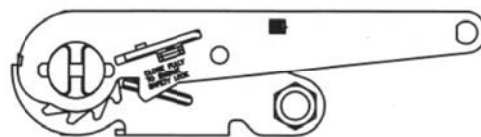


Figure 4.

X2 Zip Line

Installation/Owner's Manual

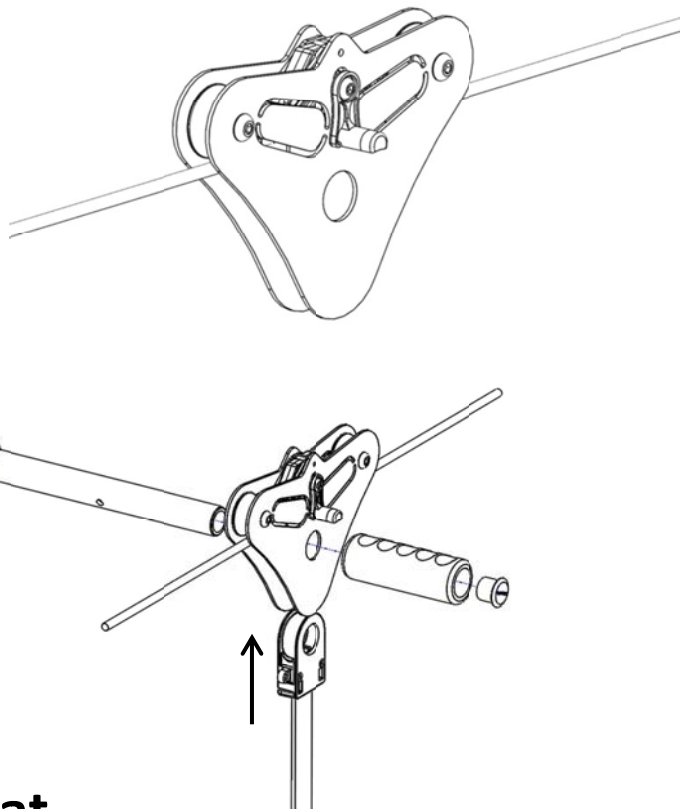
v.0.2 26102014

©2014 Alien Flier LLC. All Rights Reserved

Installing the Alien Flier Trolley on to Your Line

No Tools Needed

1. Drop Trolley Assembly onto the line
2. Thread the Tow Rope through the eyelets on the Pop N' Snap Ring Assembly. Tie in knot to secure. (*not pictured*)
3. Slide Pop N' Snap Ring Assembly attached to your seat or harness into the Trolley from the bottom; make sure holes are lined up.
4. Slide Handle through the Trolley and Pop N' Snap Ring Assembly, lining the buttons up top and bottom.
5. Depress buttons and click Handle in place.
6. Install End Caps on each side of the Handle
7. Slide Foam Grips onto the Handle



To Remove Handles/Swap Seat

1. Remove the foam grip from one side of the handle assembly.
2. Hold the trolley firmly and grasp handle on the side that still has the foam grip attached.
3. Quickly pull the handle free.

X2 Zip Line

Installation/Owner's Manual

v.0.2 26102014

©2014 Alien Flier LLC. All Rights Reserved



Recommendations for Launching

We HIGHLY recommend **towing** the rider to reach the top of the run. The rider sits **safely** on the seat while holding the T-bar. An adult using the provided towline pulls the rider to the top eliminating the need for a platform or ladder where falling accidents most commonly occur.

Trolleys without a Seat: a Word of **Caution**

It is *extremely* important to understand when setting up a seat-less zip line there is the potential for the rider to lose grip and fall. **TAKE EXTREME CARE** in the design of your zip line run so that if the rider does lose grip that the fall is only a few feet.

PLEASE REFER TO OUR ASSUMPTION OF RISK STATEMENT.

X2 Zip Line

Installation/Owner's Manual

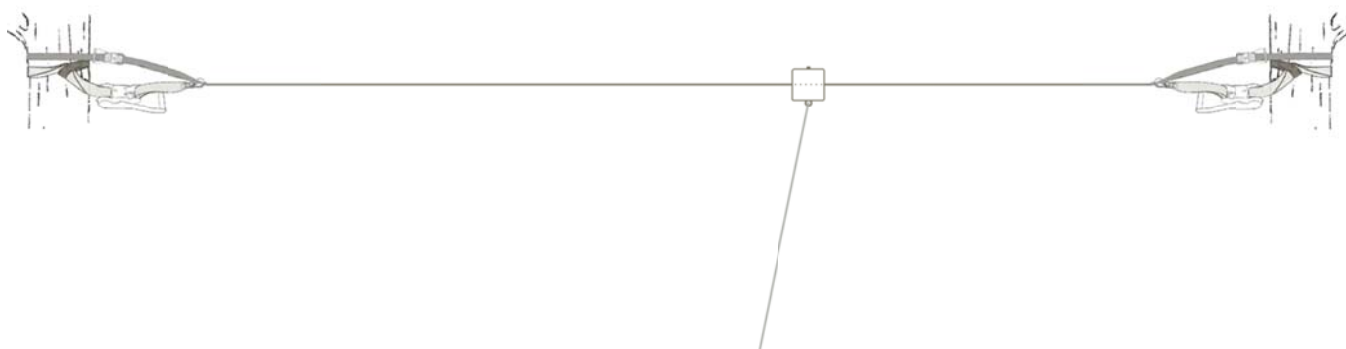
v.0.2 26102014

©2014 Alien Flier LLC. All Rights Reserved

Installing a Stop Block

A Stop Block is a simple device. It rides on the cable and is attached to a shock cord or bungee cord, which is anchored to a tree or is staked into the ground. As the rider nears the end of the line, the trolley comes in contact with the stop block causing the shock cord to stretch and slow the rider to a stop. These are very inexpensive, safe and tensions can be adjusted for different size riders.

1. **To prepare:** Have a helper hold one end of the shock cord at the termination point of the zip line. Taking the other end, walk up the length of the line until the cord has reached its maximum stretch. From that point, measure an additional 2 ft. and mark. **THIS IS WHERE YOU WILL SECURE THE SHOCK CORD.**
2. Place one half of the Stop Block on either side of the line. Secure the block together with eye bolts and spacers. Be sure that the eyes are facing down.
3. Thread the shock cord through BOTH screw eyes. Tie to secure.
4. Secure shock cord to one side, perpendicular to the zip line, using one of the methods listed below.



Methods for Securing the Stop Block

1. Tie-off to a 2 foot Ground Stake
2. Tie-off to a tree in a suitable position adjacent to your line.
3. Tie-off to a cinder block. Bury the block at a depth of at least TWICE its height.

X2 Zip Line

Installation/Owner's Manual

v.0.2 26102014

©2014 Alien Flier LLC. All Rights Reserved



Replacing the Speed Control Pad

Required Tools:

7/16" wrench; 5/32 Allen Wrench; Flat head screwdriver

1. Remove bolt on Speed Control mechanism using the wrench and Allen wrench.
2. **Rotate** Speed Control mechanism 180 degrees
3. Remove old pad.
4. Put in new pad.
5. Return Speed Control mechanism to original position by rotating 180 degrees.
6. Replace bolt.

X2 Zip Line

Installation/Owner's Manual

v.0.2 26102014

©2014 Alien Flier LLC. All Rights Reserved

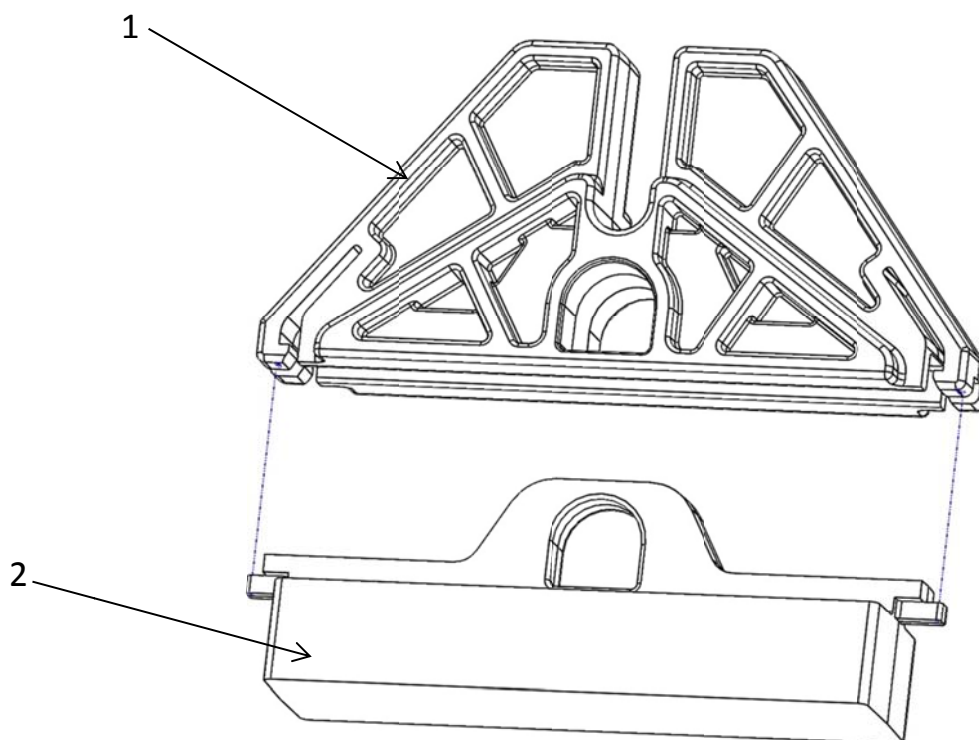


ziplines & slacklines

Replacement Parts

Speed Control Assembly

Find No	Part No	Description	Qty
1	AF-30260000-ZP	SPEED CONTROL FRAME	1
2	AF-30261000-ZP	SPEED CONTROL PAD	1



X2 Zip Line

Installation/Owner's Manual

v.0.2 26102014

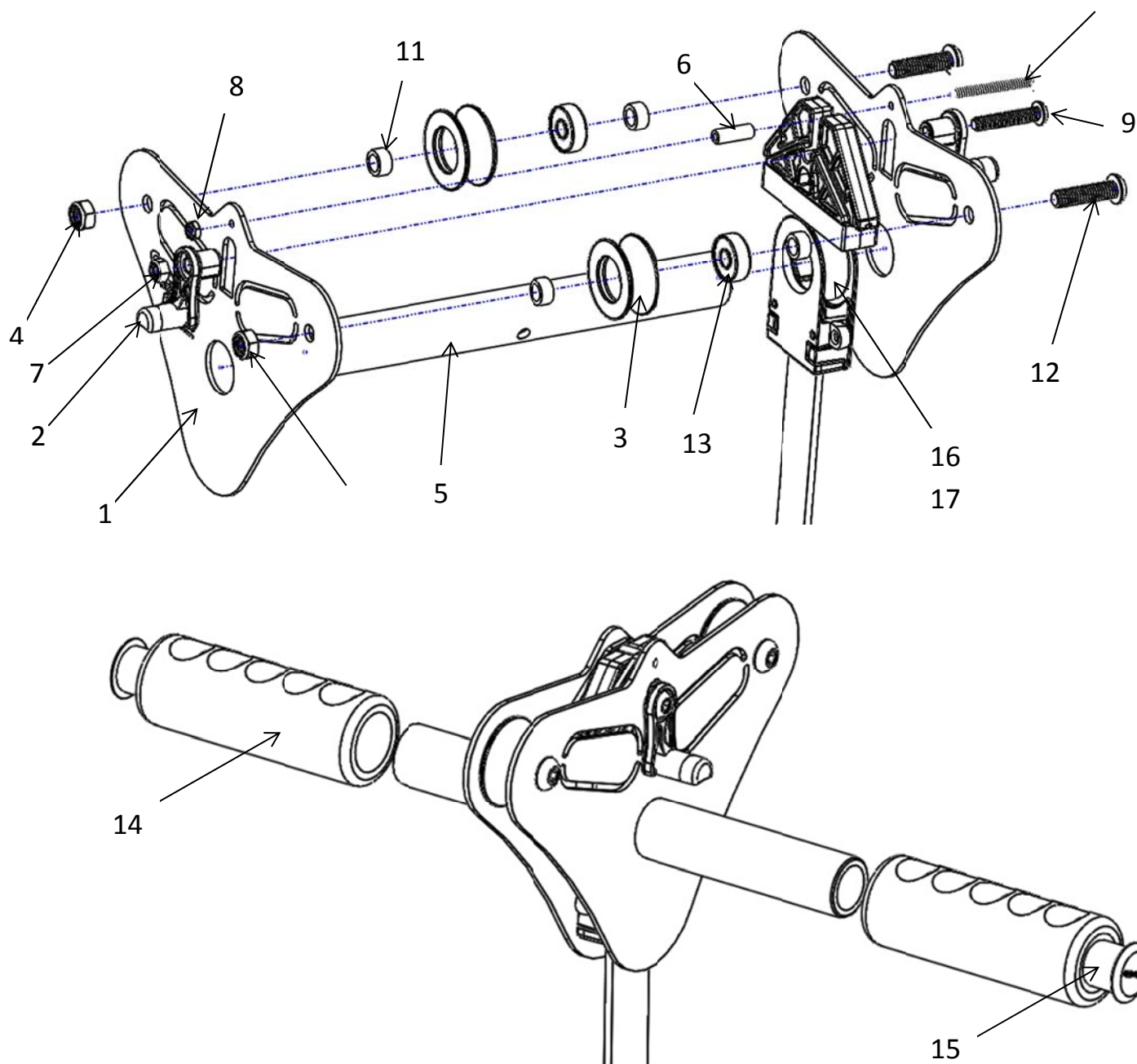
©2014 Alien Flier LLC. All Rights Reserved



ziplines & slacklines

Replacement Parts

Trolley Assembly



X2 Zip Line

Installation/Owner's Manual

v.0.2 26102014

©2014 Alien Flier LLC. All Rights Reserved



ziplines & slacklines

Replacement Parts

Trolley Assembly, *continued*

Find No	Part No	DESCRIPTION	QTY
1	AF-30522000-ZP	FRAME , BLACK G2	2
2	AF-30262000-ZP	TRIGGER, SPEED CONTROL LEVER G2	2
3	AF-31500000-ZP	PULLEY, SHEAVE G2	2
4	AF-30820000-ZP	NUT, LOCKING 5/16-18	2
5	AF-30710000-ZP	TUBE, HANDLE G2	1
6	AF-30982000-ZP	SPACER, SPEED CONTROL G2	1
7	AF-30981000-ZP	NUT, LOCKING M6X1	1
8	AF-30971000-ZP	NUT, LOCKING #6-32	1
9	AF-30980000-ZP	SCR M6X1 35mm L, BH SOCKET	1
10	AF-30970000-ZP	SCR #6-32 1" L, BH SOCKET	1
11	AF-31120000-ZP	SPACER, FRAME G2	4
12	AF-30960000-ZP	SCR 5/16-18X1 1/4" L, BH SOCKET	2
13	AF-30100001-ZP	BEARING, SHEAVE G2	2
14	AF-30410000-ZP	GRIP, FOAM	2
15	AF-31320000-ZP	END CAP	2
16	AF-31311000-ZP	DONUT B, G2	1
17	AF-31310000-ZP	DONUT A, G2	2

X2 Zip Line

Installation/Owner's Manual

v.0.2 26102014

©2014 Alien Flier LLC. All Rights Reserved



ziplines & slacklines

Replacement Parts

Seat Assemblies

